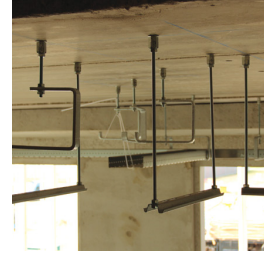
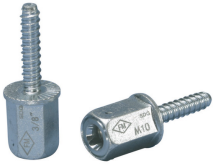
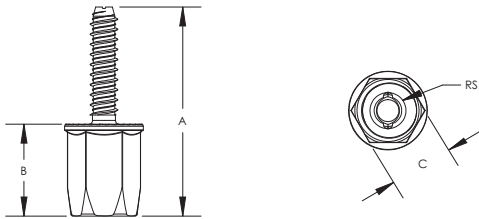


CADDY ROD LOCK Anchor Screw – CRLA37EG



- For use with concrete and solid brick
- Prefabricated assemblies easily lift and lock into place, helping to save time and money
- Works with slightly damaged threads and minor burrs on the threaded rod



Part Number	CRLA37EG
Material	Steel
Finish	Electrogalvanized
Rod Size (RS)	3/8"
A	2 7/8"
B	1 1/4"
C	7/8"
Drill Bit Diameter	5/16"
Drill Hole Depth	2"
Static Load (F)	652 lb
Certifications	FM
Standard Packaging Quantity	25 pc
UPC	78285664949

For use on plain and electro zinc plated hardware only.
 Tested in 3,000 psi [20.68 MPa] concrete and soft or hard wood with a 9/32" pilot hole.

FM is a registered certification mark of FM Approvals LLC, LTD.

WARNING

Pentair products shall be installed and used only as indicated in Pentair's product instruction sheets and training materials. Instruction sheets are available at erico.pentair.com and from your Pentair customer service representative. Improper installation, misuse, misapplication or other failure to completely follow Pentair's instructions and warnings may cause product malfunction, property damage, serious bodily injury and death and/or void your warranty.

© 2017 Pentair All rights reserved
 Pentair, CADDY, CADWELD, CRITEC, ERICO, ERIFLEX, ERITECH and LENTON are owned by Pentair or its global affiliates.
 All other trademarks are the property of their respective owners. Pentair reserves the right to change specifications without prior notice.

