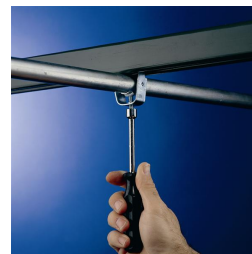
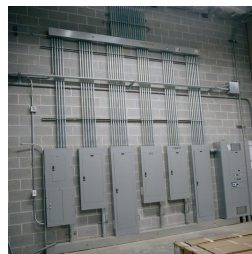
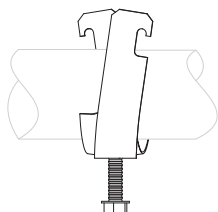
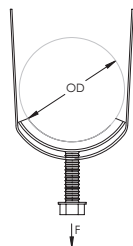


SCH2 Single Piece Strut Clamp for Cable/Conduit – SCH32B



- One-piece cable/conduit clamp with protective boot
- No screws or bolts to drop
- Requires only a screwdriver or nutdriver for installation
- Fits into open side of strut channel



Part Number	SCH32B
Material	Steel
Finish	Electrogalvanized
Outer Diameter (OD)	1.74" – 2.20"
EMT Conduit Size	2"
Rigid Conduit/Pipe Size	1 1/2"
Static Load (F)	350 lb
Certifications	cULus
Standard Packaging Quantity	50 pc
UPC	78285625237

UL, UR, cUL, cUR, cULus and cURus are registered certification marks of UL LLC.

WARNING

Pentair products shall be installed and used only as indicated in Pentair's product instruction sheets and training materials. Instruction sheets are available at erico.pentair.com and from your Pentair customer service representative. Improper installation, misuse, misapplication or other failure to completely follow Pentair's instructions and warnings may cause product malfunction, property damage, serious bodily injury and death and/or void your warranty.

© 2017 Pentair All rights reserved

Pentair, CADDY, CADWELD, CRITEC, ERICO, ERIFLEX, ERITECH and LENTON are owned by Pentair or its global affiliates.

All other trademarks are the property of their respective owners. Pentair reserves the right to change specifications without prior notice.

