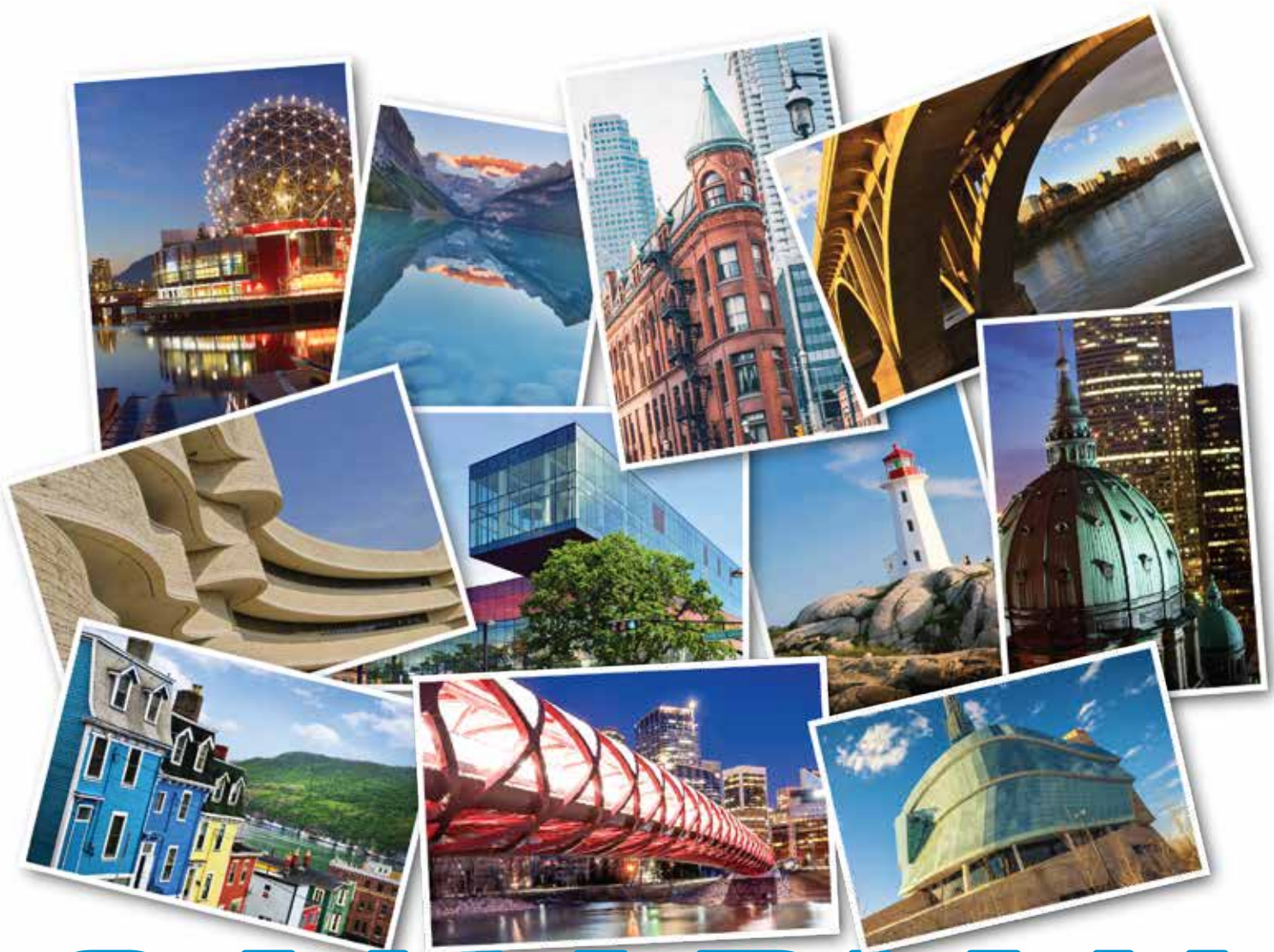


THE ELECTRICIAN'S
CHAMPION™



CANADIAN

PRODUCT GUIDE



www.idealindustries.ca

MADE IN CANADA



IDEAL CUSTOMER SERVICE:
Email: orderdesk@idealindustries.com
1-800-824-3325

PROUDLY MADE IN CANADA

Since 1962, IDEAL INDUSTRIES (CANADA), CORP. has been committed to making work easier and safer for professional tradespeople across Canada.

Our Canadian facility is located in Ajax, Ontario, and is the manufacturing home of Canada's #1 selling wire connector, Can-Twist™, as well as hand-crafted leather goods, and Yellow 77® cable pulling lubricant.

At IDEAL Canada, we are committed to maintaining a strong culture focused on innovation, collaboration, and integrity. We take great pride in our work, and our ability to continuously deliver quality products and services to Canada and the entire IDEAL network.

It's easy to see why we have developed the reputation for trust, quality and value in everything we sell.



Look for this symbol throughout this catalogue - it identifies products that are proudly made at our Ajax, Ontario manufacturing facility.

ABOUT IDEAL INDUSTRIES

J. Walter Becker founded IDEAL in 1916 and made a promise that is still an important part of the way IDEAL operates today: "An IDEAL product will provide a value greater than the price paid for it. Service is a part of the product."

Becker's foundational principle represents our everyday commitment to you. It means we're proud of the way we do business.

IDEAL is one of the world's leading manufacturers of quality tools, accessories, and supplies, proudly serving the electrical, construction, maintenance, data communications, aerospace and original equipment markets. Over 6,000 items make up the IDEAL family of products. Our leading brands have found their way into the tool bags of trade professionals, including Can-Twist™ Wire Connectors, Tight-Sight® Clamp Meters, Yellow 77® Cable Pulling Lubricant, and T®-Stripper Wire Strippers to name a few.

Although IDEAL is a global, growing, multi-national corporation creating some of the world's most innovative technology, at our heart, we are still a family business.

THE ELECTRICIAN'S
CHAMPION™



THE ORIGINAL “ONE SIZE FITS ALL”

CAN-TWIST™ WIRE CONNECTORS

CANADA'S BEST SELLING CONNECTOR SINCE 2001!

FLEXIBLE OUTER SHELL

Virtually eliminates cracking, expanding to securely accommodate wire - indicated by white expansion lines

EXCEPTIONAL WIRE-RANGE CAPACITY

Listed for over 400 different wire combinations from 22 to 8 AWG (solid and/or stranded)

HEAT-SET, SQUARE-CUT SPRINGS

Stay in place, and firmly grip wire for superior reliability

ERGONOMIC, EASY-TWIST DESIGN

Only a few turns are needed to achieve torque, without the need to pre-twist wire

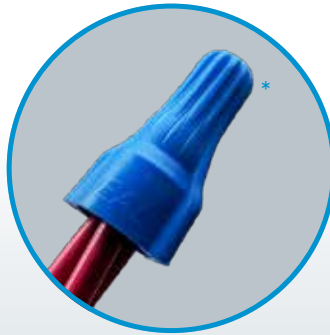
EXTENDED SKIRT LENGTH

Provides over-strip protection

SLEEK DESIGN

Helps reduce box fill

CSA Approved
20 amp / 600V
Operating temp.
up to 105 °C
/ 221 °F



DESIGNED TO
STRETCH
WITHOUT CRACKING

It's easy to see when you have a tight, reliable connection.

Can-Twist™ connectors have been engineered to offer outstanding elastic properties.

Constructed using a unique copolymer material, a Can-Twist connector will stretch, without cracking, to accommodate even large diameter wire combinations.

*Photo shows Can-Twist™ connector with three #10 AWG solid conductors



CONNECTORS

CAN-TWIST™ WIRE CONNECTORS



“One Size Fits All” - Canada’s Best Selling Connector!

- Exceptional wire-range capacity - listed for over 400 different wire combinations from 22 to 8 AWG (solid and/or stranded)
- Ergonomic, easy-twist design - only a few turns are needed to achieve torque, without the need to pre-twist wire
- Heat-set, square-cut springs stay in place, and firmly grip wire for superior connectivity
- Flexible outer shell virtually eliminates cracking, expanding to securely accommodate wire - indicated by white expansion lines
- Extended skirt length provides over-strip protection
- Sleek design helps reduce box fill
- Wire combinations: min. 3x22 AWG / max. 3x10 AWG
- CSA Approved 20 amp / 600V (CSA 22.2 #188 Certified)
- Operating temperature up to 105 °C / 221 °F

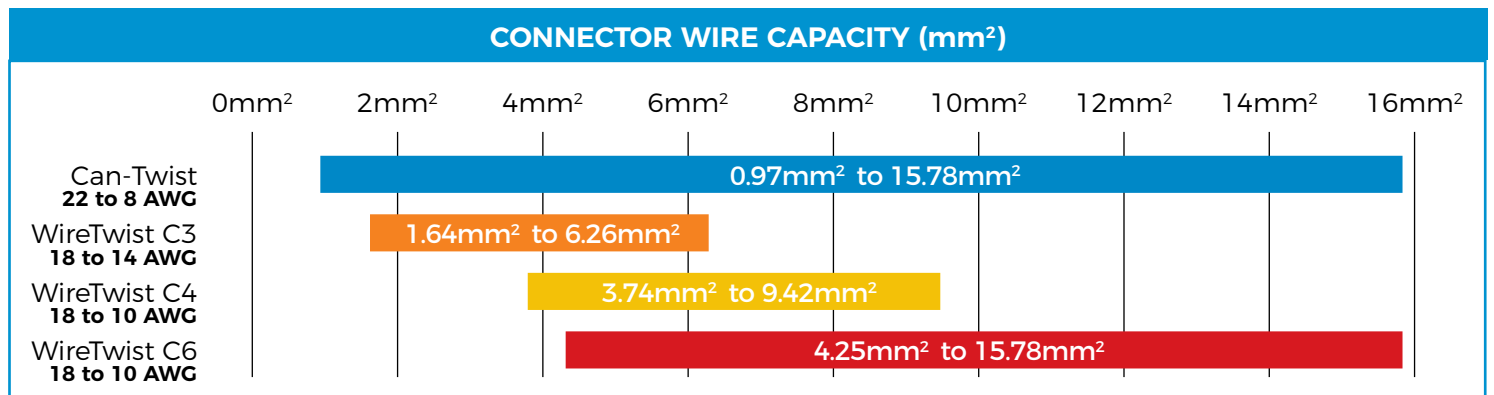


PACKAGE DETAILS	CAT #
C-Pak of 100 Connectors	30-207
Jar of 175 Connectors	30-107J
Jar of 475 Connectors	30-307J
Bag of 500 Connectors	30-607
Jar of 1,000 Connectors	30-707J
Stubby Barrel of 7,500 Connectors	30-817
Barrel of 25,000 Connectors	30-807



**CU/CU
ONLY**

CSA 22.2 #188 Certified



THE ELECTRICIAN'S
CHAMPION™





Get your choice of any of premium when you buy a barrel (or 4x stubbies) of Can-Twist™, Canadian WireTwist™ (CWT), Twister®, or Wire-Nut® wire connectors.

Visit idealindustries.ca/barrels to see our current premium selection, and submit your claim.

BARREL PREMIUMS

CAN-SNAP™ NON-METALLIC FITTINGS



The IDEAL Can-Snap connector provides exceptional performance, and incredible value!

Can-Snap is installed quickly and easily, without the use of tools, securing cable in place and providing superior protection from damage that can be caused by rough knock-out edges.

- Quick and easy installation - simply push in, no tools required
- Protects and secures cable
- Sizes are colour coded for quick identification
- Convenient jar packaging
- 1/2" Size: CSA Certified / UL Listed
- 3/4" Size: CSA Certified
- Proudly made in Canada!

CABLE SIZES

- **1/2"**: 14/2, 14/3, 12/2, 10/2
- **3/4"**: 8/3, 6/3



CAN-SNAP CONNECTOR - 1/2" (BLUE)	CAT #
Jar of 250	91-720J
Jar of 125	91-710J
Jar of 50	91-700J
Stubby of 2,500	91-740
Barrel of 10,000	91-750



CAN-SNAP CONNECTOR - 3/4" (RED)	CAT #
Jar of 50	91-800J



THE ELECTRICIAN'S
CHAMPION™





CANADIAN WIRETWIST™ CONNECTORS

- Heavy gauge outer shell for superior dielectric performance
- Heat-set, square-cut springs stay in place, and firmly grip wire
- CSA Certified and UL Listed for 600V maximum building wire, and 1000V maximum for signage/fixture applications

Wire size range (solid and/or stranded):

- **C3** - 18 to 14 AWG (min. 1x14 + 2x18 / max. 1x10 + 2x14)
- **C4** - 18 to 10 AWG (min. 2x18 / max. 3x14)
- **C6** - 18 to 10 AWG (min. 2x16 + 2x18 / max. 3x10)

CSA 22.2 #188 Certified



**CU/CU
ONLY**

PACKAGE DETAILS / CAT #	C3	C4	C6
C-Pak of 100 Connectors	30-0C3	30-0C4	30-0C6
Flip Tub of 500 Connectors	30-3C3	30-3C4	30-3C6
Flip Tub of 1,000 Connectors	30-4C3	30-4C4	-
Barrel of Connectors	30-6C3 (45K Pieces)	30-8C4 (25K Pieces)	30-8C6 (20K Pieces)

WIRETWIST™ CU/AL CONNECTORS

Copper to aluminum connectors

- The only copper to aluminum twist-on connector specifically designed to provide a secure connection while preventing aluminum corrosion
- Pre-filled antioxidant compound prevents oxidation of aluminum conductors
- Swept wings and hexagonal head for easy installation by hand or with standard nut driver
- Live-action, square-wire spring expands and contracts with aluminum wire
- CSA C22.2 #188 Certified



PACKAGE DETAILS	CAT #
Card of 15 Connectors	30-1CCUAL
Jar of 75 Connectors	30-2CCUAL
Jar of 300 Connectors	30-3CCUAL

CONNECTORS

CANADIAN CONNECTOR KIT

Great for Servicing Technicians!

- Convenient kit includes a mix of the most popular connector sizes, fitting a wide range of wire gauges from 6 AWG to 26 AWG
- Durable, reusable carrying case

Kit Includes:

- 105 X Can-Twist™ - 22 to 8 AWG
- 100 X Blue WireTwist™ (WT2) - 22 to 14 AWG
- 100 X Orange Canadian WireTwist™ (C3) - 18 to 14 AWG
- 50 X Yellow Canadian WireTwist™ (C4) - 18 to 10 AWG
- 50 X Grey WireTwist™ (WT1) - 22 to 14 AWG
- 20 X Red Canadian WireTwist™ (C6) - 18 to 14 AWG
- 20 X Blue WingTwist™ (WT54) - 14 to 6 AWG



CSA 22.2 #188 Certified

DESCRIPTION	CAT #
Canadian Connector Kit	30-2088

LEATHER



LEATHER



All of our quality leather goods are handcrafted in Canada by a team of talented artisans. Designed to work as hard as you do, IDEAL leather totes & pouches keep their shape, and are rugged & durable, so you can proudly carry them with you for years to come.

MATERIAL SELECTION

Our products are made from top grain leather, and are available in a choice of finishes, depending on your needs. Like all leather goods, the colour of our totes and carriers will enhance over time to a rich, deep hue.

Premium Leather

Our top of the line items are crafted from heavy weight, top grain cowhide that is slowly vegetable tanned to enhance the leather's inherent strength. The leather is hand waxed for lasting protection against moisture and is backed by a limited lifetime warranty (details below). Available in either (1) tan or (2) black colour.

Standard Leather

Our standard leather products (3) are constructed from top grain, natural cowhide, tanned for added strength and durability. The colour will deepen over the years. Standard leather items are backed by a five year warranty (details below).



LEATHER CARE

IDEAL leather goods are designed to stand up to harsh work environments and require little maintenance. However, leather is a natural product and can be susceptible to damage if it's natural oils are removed. Substances like mud or concrete should always be removed from the surface before they have a chance to dry, by wiping with a damp cloth.

Should you wish to clean your product, we recommend doing this on an annual basis, using a non-oil based leather cleaner, saddle soap, or gently wiping with a soft cloth, lightly dampened with warm, soapy water. Cleaning should be followed by the application of a leather conditioner, or a light coating of petroleum jelly. When using any cleaners or conditioners, always follow the manufacturers instructions.

LIFETIME WARRANTY & REPAIRS

At IDEAL, we believe that your tool carrier should withstand the test of time, and that's why all our Premium Leather goods are backed by a limited lifetime warranty against defects in workmanship and materials.

Standard Leather products are covered by an industry-leading 5-year warranty against material and workmanship defects.

Should your tote or pouch need any type of repair, simply contact our customer service team to discuss options.



NEW! TUFF-TOTE™ EXTREME

An extra-large, fully-loaded version of our popular Tuff Tote Ultimate, the Tuff Tote Extreme was designed with the needs of the professional tradesperson in mind.

Includes all the features of the Tuff-Tote Ultimate (see previous page) plus extras including:

- A large, convenient compartment designed to hold a power drill
- Closed pocket for quick access to smaller items such as drill bits or connectors
- Tape measure hook, and multi-purpose latch
- Four large outside loops to accommodate nut-drivers
- Dimensions: ~15"W x 9"D x 15.5"H



DESCRIPTION / CAT #	STANDARD LEATHER	PREMIUM TAN LEATHER	PREMIUM BLACK LEATHER
Tuff-Tote™ Extreme W/ Shoulder Strap	35-326	35-990	35-990BLK

LEATHER

TUFF-TOTE™ ULTIMATE



- Features a large center compartment and two divided compartments with multiple internal tool loops, four outside pockets, eight outside tool loops, and an electrical tape-chain
- Leather-wrapped grab handle and removable shoulder strap, maximize carrying comfort, convenience and versatility
- Vertical corner seams are reinforced internally with polypropylene, ensuring the tote remains rigid and upright
- Constructed with rust-resistant, plated-steel hardware and heavy, lock-stitched nylon thread for long-term durability
- Polypropylene and rubber reinforced base provides stability, and resistance against oil and moisture
- Dimensions: ~9"W x 9"D x 15.5"H



This ultra-durable, large capacity tote organizes all your hand tools

DESCRIPTION / CAT #	STANDARD LEATHER	PREMIUM TAN LEATHER	PREMIUM BLACK LEATHER
Tuff-Tote™ Ultimate W/ Shoulder Strap	35-325	35-975	35-975BLK



LEGACY PRO TOOL CASE

- Convenient, multi-purpose case to carry a variety of tools and testers
- Features a divided main compartment with multiple loops and pockets; expandable meter pocket; removable side pouch; and secure pocket for tablets and devices
- Leather-wrapped grab handle and removable shoulder strap, maximize carrying comfort, convenience and versatility
- Constructed with rust-resistant, plated-steel hardware and heavy, lock-stitched nylon thread for long-term durability
- Polypropylene and rubber reinforced base provides stability, and resistance against oil and moisture
- Dimensions: ~12"W x 10"D x 15"H

Unique design with covered flap for added security



DESCRIPTION / CAT #	PREMIUM TAN LEATHER	PREMIUM BLACK LEATHER
Legacy Pro Tool Case	35-974	35-974BLK

LEATHER

TUFF-TOTE™ TOOL CARRIER



- Designed to keep tools standing upright for quick identification and easy access
- Features two center compartments (one divided into three sections), centre slots that accommodate four screwdrivers, two divided outside pockets, four outside tool loops, a multi-purpose latch, plus an electrical tape chain
- Leather-wrapped grab handle and removable shoulder strap, maximize carrying comfort, convenience and versatility
- Constructed with rust-resistant, plated-steel hardware and heavy, lock-stitched nylon thread for long-term durability
- Polypropylene and rubber reinforced base provides stability, and resistance against oil and moisture
- Dimensions: ~8.5"W x 7"D x 15"H



DESCRIPTION / CAT #	PREMIUM TAN LEATHER
Tuff-Tote™ Carrier W/ Shoulder Strap	35-969



ERGO JR. LEATHER POUCH

- Compact, ergonomic design for superior comfort
- Can be carried three ways - on a belt, with a shoulder strap, or as a hand-pouch (shoulder strap or belt available separately)
- Features 12 individual tool pockets, a multi-purpose loop (holds a tape measure, etc), and an electrical tape-chain
- Conforms to the contours of your leg when worn on a belt, and features an extended base cap protects your leg from tool points
- Constructed with rust-resistant, plated-steel hardware and heavy, lock-stitched nylon thread for long-term durability
- Dimensions: ~6.5"W x 3"D x 13"H



DESCRIPTION / CAT #	STANDARD LEATHER	PREMIUM TAN LEATHER	PREMIUM BLACK LEATHER
ERGO Jr. Leather Pouch	35-312	35-966	35-966BLK

LEATHER

TUFF-TOTE™ TOOL POUCH

- Features eight pockets (a center compartment divided into three, and five outer pockets), slots to accommodate six screwdrivers, a multi-purpose latch, plus an electrical tape-chain
- Can be belt mounted, or carried using removable shoulder strap or grab handle
- Full-width belt tunnel accommodates belts up to 2 1/4" wide
- Constructed with rust-resistant, plated-steel hardware and heavy, lock-stitched nylon thread for long-term durability
- Dimensions: ~9"W x 4"D x 11"H



DESCRIPTION / CAT #	STANDARD LEATHER	PREMIUM TAN LEATHER	PREMIUM BLACK LEATHER
Tuff-Tote™ Pouch W/ Shoulder Strap	35-311	35-950	35-950BLK

ELECTRICIAN'S TOOL POUCH

- This belt-mounted pouch keeps your most important tools right by your side for convenient access
- Features seven pockets, a multi-purpose latch, plus an electrical tape chain
- Full-width belt tunnel
- Constructed with rust-resistant, plated-steel hardware and heavy, lock-stitched nylon thread for long-term durability
- Dimensions: ~8"W x 4"D x 10.5"H



DESCRIPTION / CAT #	STANDARD LEATHER
Electrician's Tool Pouch	10-466

THE ELECTRICIAN'S
CHAMPION™





BELTS & SHOULDER STRAPS

- High quality belts and shoulder straps can be used with IDEAL totes and pouches, or other products
- Adjustable length shoulder straps feature a wide, repositionable shoulder pad for added carrying comfort
- Constructed with rust-resistant, plated-steel hardware and heavy, lock-stitched nylon thread for long-term durability



DESCRIPTION / CAT #	STANDARD LEATHER	PREMIUM TAN LEATHER	PREMIUM BLACK LEATHER
Shoulder Strap	35-338	35-965	35-965BLK
Belt - Size 1 3/4" x 46"	35-316	-	-
Belt - Size 2" x 48"	-	35-995	35-995BLK

CUSTOM PRODUCT IMPRINTING

Many of our products can be custom imprinted in-house with your company logo or message. There is no additional charge for this service when you order 50 or more pieces of the applicable product. Simply contact our customer service team for more details.



LEATHER & CUSTOM IMPRINTING

CUSTOM LEATHER EMBOSSING & PROMOTIONS

Custom leather goods are a great way to advertise your brand, or reward outstanding customers and team members!

Any of our leather products can be embossed with your logo or artwork, including totes, pouches and belts. We can also personalize key rings, coaster sets, and other promotional products. Have an idea for a custom item? Our team will work with you to try to make it a reality.

Custom embossing is available at very reasonable minimum quantities, and can be turned around quickly, since all our leather work is done in-house at our Ajax, Ontario facility.

Please contact our customer service team for more details and to discuss your project.



NEW! ELECTRICIAN'S BACKPACK TOOL KIT

This kit features a standard assortment of tools, complete with our new dual-compartment backpack - designed with durability, functionality and ergonomics in mind.

Kit Includes:

- Dual Compartment Tool Backpack
- 9-1/4" Side Cutting Pliers with Crimp
- 8" Long Nose Pliers
- 8" Diagonal Cutting Pliers
- 10" Tongue & Groove Pliers
- 4" #2 Phillips Screwdriver
- 6" Electrician's Cabinet Tip Screwdriver
- 6" #1 Original Robertson Screwdriver with Cushion Grip (Green)
- 6" #2 Original Robertson Screwdriver with Cushion Grip (Red)
- T®-Stripper Wire Stripper (10-18 AWG Solid)
- 25" Automatic Blade Lock Measuring Tape



DESCRIPTION / CAT #	CAT #
Electrician's Backpack Tool Kit	10-459BP

12-PIECE APPRENTICE TOOL KIT

Our most popular tool kit!

This assortment includes all the tools needed to get started in the industry - great for apprentices and professionals alike. Available with your choice of leather carrier, and either a belt or a shoulder strap, depending on your preference

Kit Includes:

- Tuff-Tote™ Leather Tool Carrier
- Choice of Coordinating Belt OR Shoulder Strap
- 9-1/4" Side Cutting Pliers with Crimp
- 8" Long Nose Pliers
- 8" Diagonal Cutting Pliers
- 10" Tongue & Groove Pliers
- 4" #2 Phillips Screwdriver
- 6" Electrician's Cabinet Tip Screwdriver
- 6" #1 Original Robertson Screwdriver with Cushion Grip (Green)
- 6" #2 Original Robertson Screwdriver with Cushion Grip (Red)
- T®-Stripper Wire Stripper (10-18 AWG Solid)
- 25" Automatic Blade Lock Measuring Tape



DESCRIPTION / CAT #	STANDARD LEATHER	PREMIUM BLACK LEATHER
Apprentice Tool Kit W/ Shoulder Strap	10-459	10-459BLK
Apprentice Tool Kit W/ Belt	-	10-459BLKB

DIPPED GRIP TOOL KIT

Kit Includes:

- Electrician's Tool Pouch -
- Coordinating Leather Belt
- 9-1/4" Dipped Grip Side Cutting Pliers with Crimp
- 8" Dipped Grip Long Nose Pliers
- 8" Dipped Grip Diagonal Cutting Pliers
- 10" Dipped Grip Tongue & Groove Pliers
- 4" #2 Phillips Screwdriver
- 6" Electrician's Cabinet Tip Screwdriver
- #1 Original Robertson Screwdriver with Cushion Grip (Green)
- #2 Original Robertson Screwdriver with Cushion Grip (Red)
- T®-Stripper Wire Stripper (10-18 AWG Solid)
- 25" Automatic Blade Lock Measuring Tape



DESCRIPTION / CAT #	PREMIUM TAN LEATHER
Dipped Grip Tool Kit	10-5459

CUSTOM TOOL KITS

Design your own custom tool kit with your choice of IDEAL products and tools. We require a minimum order of only 10 kits (per version). Kits that include our leather totes, pouches or belts can also be custom embossed with your logo or artwork.

Contact your IDEAL sales representative or our customer service team to discuss your needs.

**DESIGN YOUR OWN
CUSTOM TOOL KIT!**



THE ELECTRICIAN'S
CHAMPION™





AUTO-LOCK™ METRIC TAPE MEASURE

- Blade automatically stays out when extended
- Push button for smooth blade retraction
- Comfortable, shock-resistant rubber grip
- Double-sided with metric and imperial markings on both sides



DESCRIPTION

Auto-Lock™ Metric Tape Measure

CAT

35-242M

ORIGINAL ROBERTSON® SCREWDRIVERS

A Canadian Original!

- Only Robertson® drivers have a genuine "cling fit" Robertson square tip
- Made with S2 high carbon steel that is carefully treated for maximum wear and torque

DESCRIPTION

#1 Original Robertson - 5" Shaft (Green)

CAT

35-920

#2 Original Robertson - 5" Shaft (Red)

35-925

#3 Original Robertson - 5" Shaft (Black)

35-935



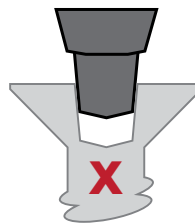
ROBERTSON® "CLING FIT"

ROBERTSON® Bits and Screws provide maximum recess penetration and "Cling Fit".



RECESS TOO LARGE

If the recess is too large, the driver will wobble and cam out.



RECESS TOO NARROW

If the recess is too narrow, the driver cannot penetrate deep enough.



INCORRECT RECESS

If the recess or bit is angled incorrectly, the driver will wobble excessively.

TOOLS & SUPPLIES

ROBERTSON® BITS

The best selling bits in the electrical industry!

- Patented colour coded bits for easy identification
- Genuine "cling fit" Robertson square tip



DESCRIPTION	CAT #
#1 Robertson Drive - 2" (Green)	10-920-50
#1 Robertson Drive - 3" (Green)	10-921-50
#1 Robertson Drive - 6" (Green)	10-925-50
#2 Robertson Drive - 2" (Red)	10-922-50
#2 Robertson Drive - 3" (Red)	10-923-50
#2 Robertson Drive - 6" (Red)	10-924-50
#2 Phillips Drive - 2"	78-0203-25

CANADIAN BIT KIT

- Can be used as a counter-top merchandiser, or in high volume workshops
- Includes our top selling Robertson and Phillips bits

Kit Includes:

- Display stand
- Header card
- 6 x Fishbowls
- 50 X #1 Robertson - 2" (10-920-50)
- 50 X #1 Robertson - 3" (10-921-50)
- 50 X #2 Robertson - 2" (10-922-50)
- 50 X #2 Robertson - 3" (10-923-50)
- 50 X #2 Robertson - 6" (10-924-50)
- 50 X #2 Phillips - 2" (78-0203-25)



DESCRIPTION	CAT #
Robertson® Bit Kit	PC-925



AQUA-GEL® CW COLD WEATHER PULLING LUBRICANT

- Remains slick, even at low temperatures
- Polymer-based formula suitable for use from -32 °C (-25 °F) to 4 °C (40 °F)
- Safe to use on all cable types
- Cleans up easily with soap and water
- Does not dry out - remains semi-fluid to aid in future pulls
- Clings to cable throughout long pulls
- For outdoor use only
- Well-suited for hand or pouring applications
- Environmentally safe: non-toxic, non-flammable and non-corrosive

PACKAGE DETAILS

CAT

1 Quart Squeeze Bottle

31-298

1 Gallon Jug

31-291

3.5 Gallon Bucket

31-293

5 Gallon Bucket

31-295



6% SILICONE GREASELESS LUBE

- A convenient, multi-purpose lubricant that can be applied to: drawer slides; steel work surfaces; squeaky wheels and hinges; chutes & rollers; filing cabinets, etc...
- Colourless and stainless
- Can also be used as a wire pulling lubricant in finished areas
- Does not damage rubber, neoprene or PVC
- Extension tube for precision spraying accuracy

PACKAGE DETAILS

CAT

6% Silicone Greaseless Lubricant

40-114

ELECTRICAL PANEL PAINT

- For touching-up electrical panels, switchgear, etc...
- Quick-drying, enamel paint with a tough, durable finish.
- Excellent adhesion for both interior and exterior applications
- Oil and moisture resistant finish for use with electrical panels, windings, motor frames, commutator parts, separator coils, switch bases, controller shafts, electrical insulation etc.
- Excellent thread sealant for gas, oil or air lines



PACKAGE DETAILS	CAT #
Electrical Finish Grey - 340g Can	40-028
Electrical Finish White - 340g Can	40-027
Electrical Finish Red - 340g Can	40-026

SWITCH & CONTACT CLEANER

- An effective cleaner for all types of electrical switches and contacts
- Completely non-conductive, non-flammable and non-corrosive
- Can be used safely on live equipment
- Quickly dissolves grease and film on contact - spray force removes these deposits from the contact surface, leaving no residue
- Recommended for low voltage applications where lubricant is not required
- Can be used with: billing machines, calculators, computers, elevator controls, railway signal equipment, telephone switching equipment, TV tuners, etc...



PACKAGE DETAILS	CAT #
Switch & Contact Cleaner - 16oz / 454g Can	40-099A
Switch & Contact Cleaner - 6oz / 170g Can	40-099

**Avoid direct spraying on ABS, acrylic, styrene, or polycarbonate materials, as solvent attack may occur*

CANNED AIR: DUST AND LINT REMOVER



- A compact, portable source of ultra-clean compressed gas for the removal of dust and lint from a variety of surfaces
- Extension tube for precision spraying accuracy
- Contains no CFCs or ozone-depleting chemicals

PACKAGE DETAILS

CAT

Dust and Lint Remover

40-600

NOALOX® ANTI-OXIDANT



- Noalox anti-oxidant compound improves efficiency and service life in aluminum electrical applications
- Suspended zinc particles penetrate and cut aluminum oxide, while carrier material excludes air to minimize further oxidation
- Provides additional inner-strand and inner-conductor current paths for improved conductivity and cooler connections
- For use with pressure-type wire connectors including lugs, taps, service entrances and split-bolts
- Reduces galling and seizing when applied on aluminum conduit joints promoting good ground continuity

PACKAGE DETAILS

CAT

1/2 oz Tube

30-024

4 oz Tube

30-026

8 oz Squeeze Bottle

30-030

8 oz Bottle (with Brush in Cap)

30-031

1 gallon Bucket

30-032

5 gallon Bucket

30-040

DUCT SEAL

- Moisture and air barrier
- Seals around junction boxes, flashings and service entrances
- Permanently soft, non-toxic compound can be painted immediately after application
- Won't adversely affect other plastic materials or corrode metals



PACKAGE DETAILS	CAT #
1 lb Block (Carton of 10)	31-601
5 lb Block (Carton of 10)	31-605

CABLE STAPLES

- Use to secure NM, lead wire, and UF cable
- Smooth, UV resistant plastic saddle will not cut or bruise cable
- Zinc-plated fasteners resist rust & corrosion
- 1/2" wide size fits 14/2, 12/2, 14/3 and 12/3 cable
- 3/4" wide size fits 14/3 and 12/3 cable



PACKAGE DETAILS	CAT #
1/2" - Jar of 500 Cable Staples	91-300J
1/2" - Pail of 1500 Cable Staples	91-400J
1/2" - Stubby Barrel of 10,000 Cable Staples	91-600
1/2" - Barrel of 30,000 Cable Staples	91-500
3/4" - Jar of 350 Cable Staples	91-310J
3/4" - Stubby Barrel of 8,000 Cable Staples	91-610
3/4" - Barrel of 20,000 Cable Staples	91-510



CONDUIT AND CABLE HARDWARE 2C86

THE ELECTRICIAN'S
CHAMPION



CAT IV FUSED TEST LEADS

- Unique finger-guard protects against accidental high voltage contact
- All-weather, double-skin silicone insulation with bi-coloured Wear-Guard Damage Control Indicator - a white layer below the red / black layer provides visual indication if cable becomes damaged
- EZ-Off caps over probe tips
- Molded, tug-resistant right-angle plugs (4mm) with strain reliefs fit standard meters

Kit Includes:

- Red and black assembly with fused probes and right-angle plugs
- 2 X 1000V ceramic fuses
- Screw-on crocodile clips
- Screw-on probe tips

Specifications:

- 1.1 m length cable
- UL / CSA IEC 61010 CAT IV -1000V Approved
- Silicone insulation rated to 10kV DC
- Fuse rating: 500mA/1000V/50kA
- Temperature rating: -10°C to +150°C



SEW
52F 1-2-4-0.5A4
1000V 0.5A
CONFORMS TO ANSI/UL STD.
61010-031
CERTIFIED TO CAN/CSA STD.
C22.2 No. 61010-031



DESCRIPTION

1000V CAT IV Custom Kit

Replacement Fuses (2) 500mA / 1000V / 50kA

CAT

TLF-014

TLF-001

FEED-THRU CONNECTOR INSTALLATION KIT

- One-piece Feed-Thru connector design simplifies cable assembly - conductor order can be verified prior to crimping, and the cable can be pushed or pulled into the connector ensuring an accurate connection
- FT-45 tool smoothly trims and crimps in one simple step, ensuring the connection is right the first time, every time.
- PrepPro® cable stripper easily strips a wide range of cable types with no adjustments required

Kit Includes:

- FT-45® Feed-Thru Modular Plug Crimp Tool (30-495)
- PrepPro® Coax/UTP Cable Stripper (45-605)
- CAT 5E Feed-Thru Modular Plugs - 50/pk
- CAT 6 Feed-Thru Modular Plugs - 50/pk



DESCRIPTION	CAT #
Installers Feed-Thru Kit	33-628

COMPRESSION CONNECTOR INSTALLATION KIT

This handy installers kit contains everything needed to cut, strip and terminate RG-6/ RG-6 Quad/ RG-6 Plenum/ RG-6 Plenum Quad cable

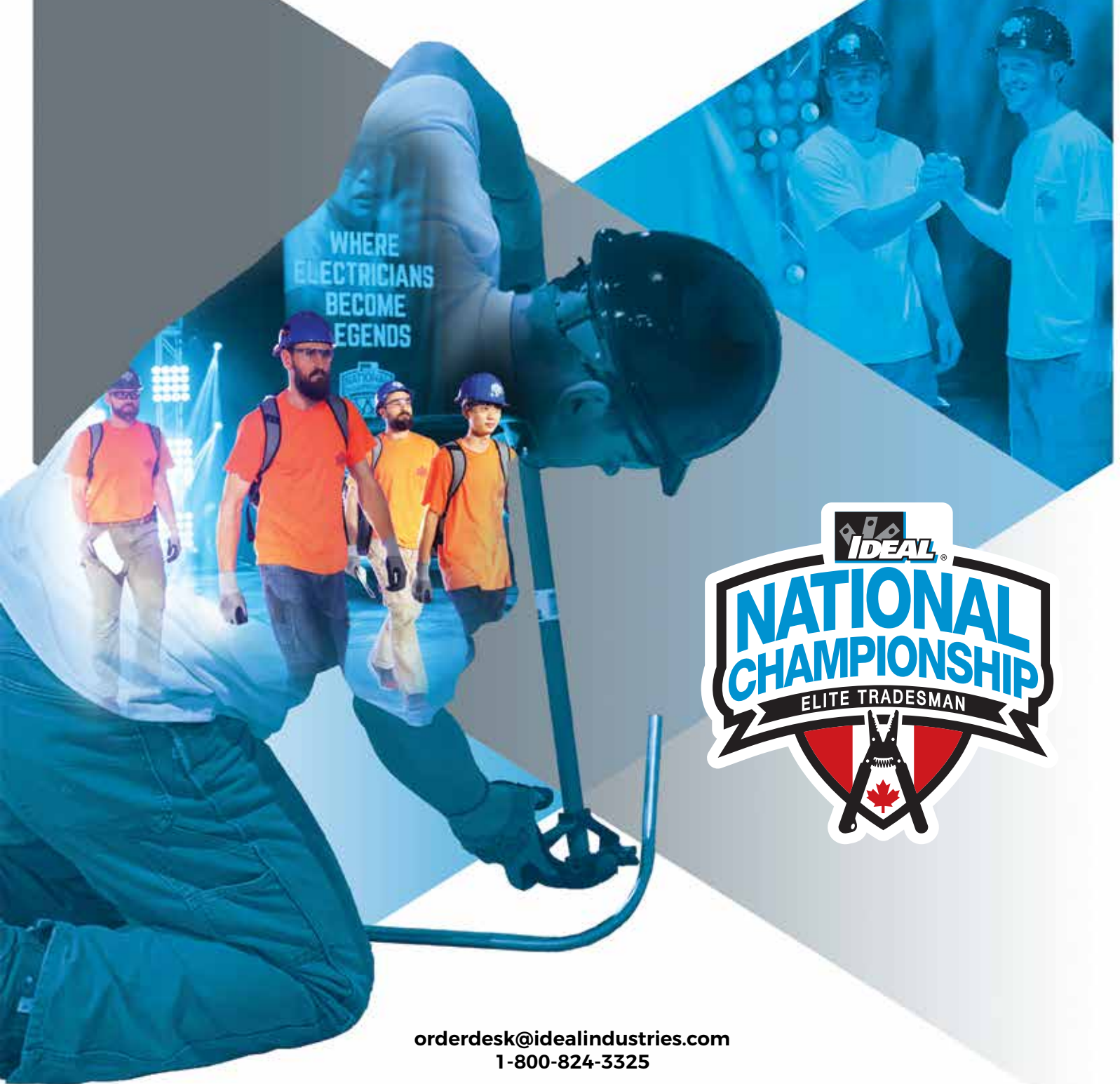
Kit Includes:

- Data T®-Cutter (45-074)
- PrepPro® Coax/UTP Cable Stripper (45-605)
- Omniseal™ Pro XL Compression Tool (30-793)
- RTQ™ XR™ RG-6 Compression Connectors - 100/pk (92-656)



DESCRIPTION	CAT #
Compression Connector Installation Kit	33-627

THE ULTIMATE COMPETITION **IDEALNATIONALS.COM**



orderdesk@idealindustries.com
1-800-824-3325

IDEAL Industries (Canada) Corp. | 33 Fuller Road | Ajax, ON | L1S2E1



www.idealindustries.ca

THE ELECTRICIAN'S
CHAMPION

